

ODEON Cinemas



The Original: Worple Road, Wimbledon



The Odeon was built for Oscar Deutch's Odeon Theatres Ltd. chain and opened on 20th April 1936 with Tom Walls in "Pot Luck". The building followed the tradition of Art Deco design, with clean lines and simple geometric décor. It has a long narrow auditorium with a stepped ceiling containing lighting troughs. Seating was provided for 924 in the stalls and 577 in the balcony.

The Original: Worple Road, Wimbledon



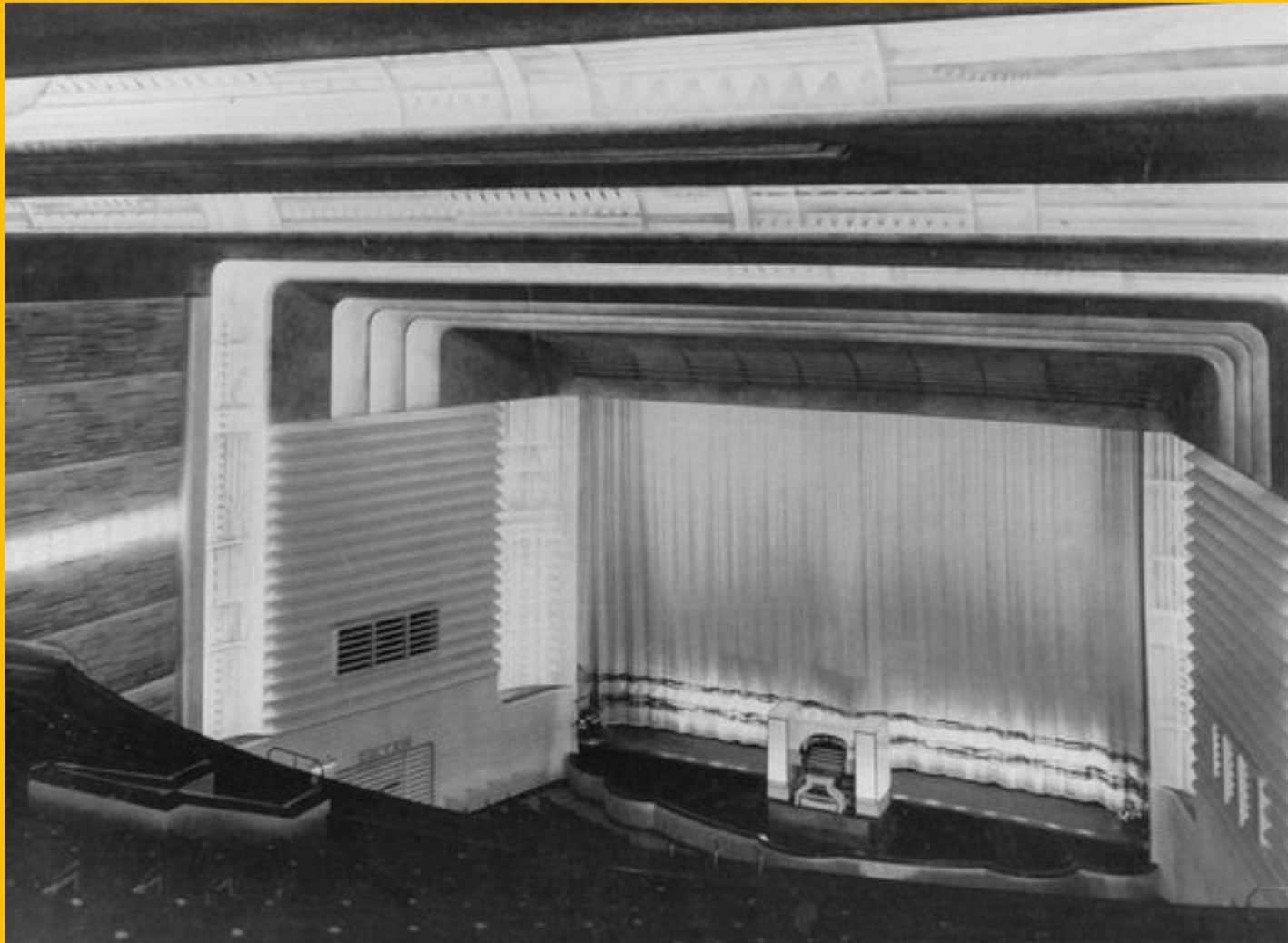
The Odeon closed on 26th November 1960 with Donald Sinden in "The Siege of Sydney Street" and Audrey Dalton in "This Other Eden". The building was later demolished and the site is now occupied by a Lidl Supermarket and office block.

The Second: Broadway, Wimbledon



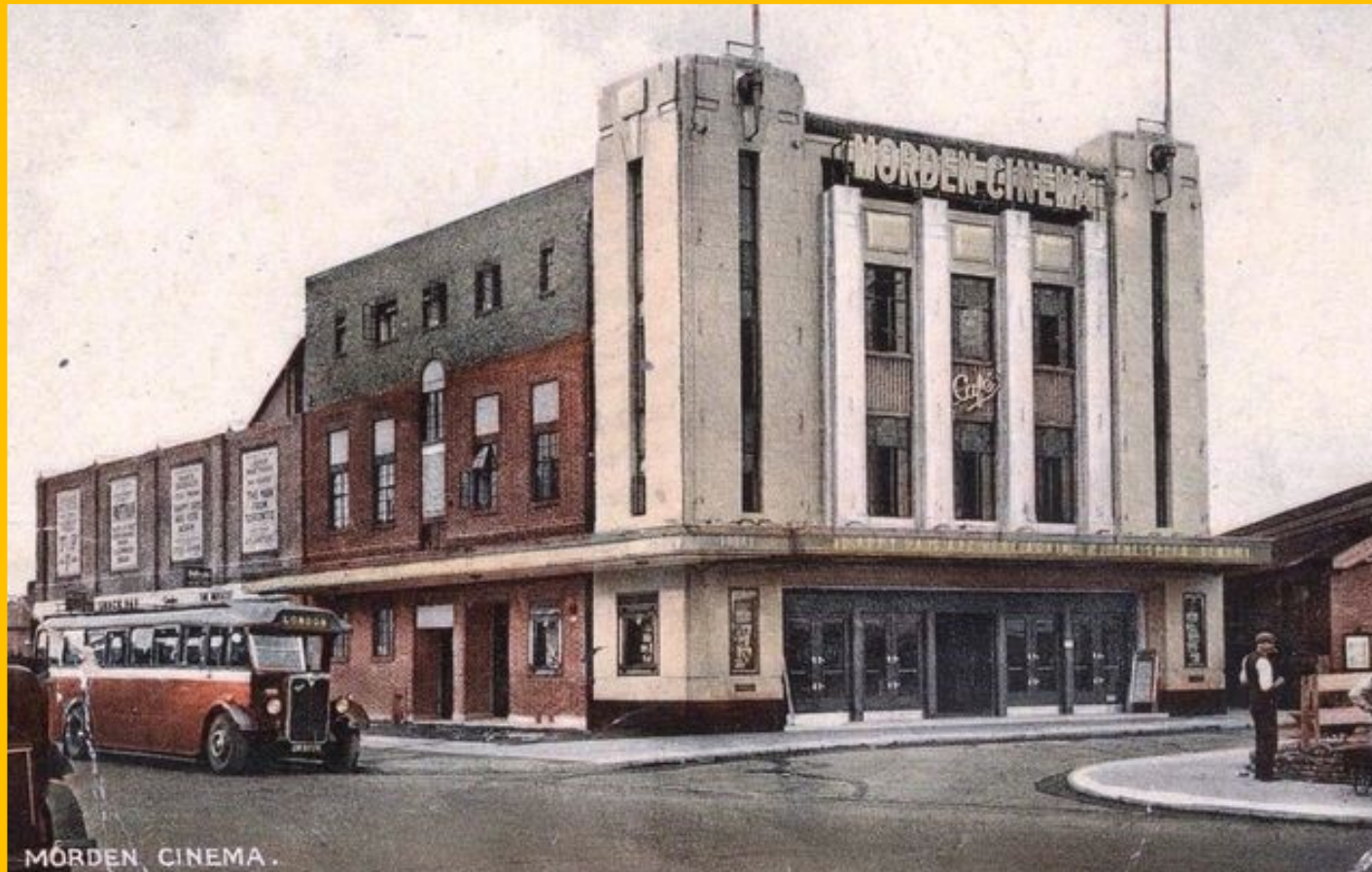
This originally opened as the Regal Cinema on 20th November 1933. Designed in the Art Deco style, the magnificent murals and designs within the building were carried out by famous interior decorators Mollo & Egan. Organist Reginald Foort was commissioned to design a special console for the Conacher 4Manual/20rank organ that was installed in the cinema. Seating was provided in stalls and balcony. There were twelve dressing rooms which were well used for variety acts. The Regal also had a cafe for the use of patrons and the general public.

The Second: Broadway, Wimbledon



County Cinemas were taken over by the Oscar Deutsch chain in September 1939 and this became its second Wimbledon cinema, (the first location being on Worple Road.) The Regal was re-named the Gaumont in November 1949 and finally became an Odeon from 9th September 1962, after the original Worple Road cinema had closed. The magnificent Conacher organ was tragically broken up for scrap and removed from the building in 1958.

The Third: London Road, Morden



Built for Herbert Alfred Yapp, this was intended as the first of his small chain of Forum Cinemas in the Wyanbee circuit. It opened as the Morden Cinema on 7th December 1932 and was designed by architects J. Stanley Beard and A. D. Clare. The cinema was equipped with a Compton 3Manual/8Rank organ - the first to be fitted with an illuminated console. This was on a lift in the orchestra pit and was opened by organist Henry Wingfield. The cinema was equipped with a small stage, for use by variety acts and two dressing rooms. The Morden Cinema also boasted a cafe and a large free car park at the rear which held 300 cars.

The Third: London Road, Morden



In October 1935, Morden Cinema was sold to the Oscar Deutsch chain and re-named the Odeon. The Rank organisation closed the cinema on 13th January 1973 with a final screening of Sid James in "Carry On Abroad" and "East Side, West Side". The building was later converted into a B&Q hardware store. Much of the interior of the cinema was still intact amongst the rows of wood panels, bathroom and kitchen fittings. B&Q eventually moved out of the building and it was demolished in 1990. Shops including Lidl and Iceland Supermarket now occupy the site.

Current Day: Wimbledon



Today, the Odeon Theatre sits in the heart of the piazza in central Wimbledon. It boasts 12 screens, with IMAX and 3D options and wheelchair access in each auditorium.

Photos Resources:

Worple Exterior photo: <http://cinematreasures.org/theaters/16640/photos/204699>

Worple Interior photo: <http://cinematreasures.org/theaters/16640/photos/59787>

Broadway Exterior photo: <http://cinematreasures.org/theaters/16639/photos/133668>

Broadway Interior photo: <http://cinematreasures.org/theaters/16639/photos/310477>

Morden Exterior photo: <http://cinematreasures.org/theaters/30983/photos/228867>

Morden Interior photo: <http://cinematreasures.org/theaters/30983/photos/204431>

Current Wimbledon photo: <https://www.ourscreen.com/odeon-wimbledon>

Information Resources:

<http://cinematreasures.org/theaters/16640>

<http://cinematreasures.org/theaters/16639>

<http://cinematreasures.org/theaters/30983>